



# CSC Chalet FAQ



Last update: 28 Sep 2023

## Quick Access

- [What is the priority code for Public Service officers?](#)
- [Overview of CSC Chalets](#)
- [Availability and Booking](#)
- [Enhancements and Promotions](#)
- [Corporate and Wedding Events](#)
- [CSC Members' Benefits for Chalets](#)
- [About CSC @ Changi I](#)
- [About CSC @ Changi II](#)
- [About CSC @ Loyang](#)

### 1) What is the priority code for Public Service officers? [Back to Quick Access](#)

The priority code is for Public Service officers, staff from Mainstream Universities and Public Healthcare organisations, and MINDEF when booking any of the CSC chalets. The priority codes will be valid till 28 September 2024. Officers and staff who are CSC members need not use the priority codes for chalet bookings.

| Agency/Organisation  | For bookings made till 28 Sep 2024 |
|--|------------------------------------|
| Civil Service<br>(Ministries and Organs of State)                      | CS2311                             |
| Statutory Boards   | SB2344                             |
| Mainstream Universities* and Public Health Organisations*              | PU2333                             |
| MINDEF (Regulars and staff only, excluding National Service Full-time) | MS2322                             |

\*Please email to [rooms@csc.sg](mailto:rooms@csc.sg) to check your organisation's eligibility

## Overview of CSC Chalets

### **2) How many CSC chalets are there, and what are the types available?**

#### **[Back to Quick Access](#)**

Civil Service Club (CSC) manages a total of 108 chalet units across CSC @ Changi I, CSC @ Changi II (Former Aloha Changi) and CSC @ Loyang (Former Aloha Loyang). The chalets range from cozy 1-bedroom suites, to generously sized 6-bedroom bungalows. In addition, some of the chalets are also handicap friendly or dog-friendly. The website links, virtual tour links and other details of the chalets can be found in the Annex ([from page 10 onwards](#)).

### **3) Who are eligible to book the CSC chalets? [Back to Quick Access](#)**

The chalets can be booked by CSC members, Public Service officers from Government Ministries and Statutory Boards, staff from Mainstream Universities and Public Healthcare organisations, MINDEF personnel as well as the general public.

### **4) What are the rates for Public Service officers? [Back to Quick Access](#)**

All Public Service officers from Government Ministries and Statutory Boards, staff from Mainstream Universities and Public Healthcare organisations, and MINDEF personnel (Regulars and staff only, excluding National Servicemen Full-time) will enjoy a single category chalet rate termed as Public Service officers' rate. National Servicemen Full-time (NSFs) are considered as public category, and will pay the same rates as the general public. The Public Service officers' rate is 20% lesser than the rate paid by the Public.

## 5) What is the booking period for Public Service officers? [Back to Quick Access](#)

The booking period of the chalets are as follows. Public Service officers have 30 days more than the Public's booking period.

|  |          |
|--|----------|
| CSC Member   | 120 Days |
| Public Service officer from any Government Ministry and Statutory Board          | 90 Days  |
| Staff from Mainstream University* and Public Healthcare organisation*            | 90 Days  |
| MINDEF personnel (Regulars and staff only, excluding National Service Full-time) | 90 Days  |
| Public   | 60 Days  |

\*Please email to [rooms@csc.sg](mailto:rooms@csc.sg) to check your organisation's eligibility

## Availability and Booking

### 6) How do I check the availability and rates of the chalet? [Back to Quick Access](#)

Checking of the chalets' availability and rates can be done through the Chalet Booking Portal at [www.cscchalets.sg](http://www.cscchalets.sg) or by scanning the following QR code below. Click "Book Now" located in the Chalet Booking Portal and select "Check Room Availability and Rate Types" on the Online Rooms Booking System page.



## 7) How to book? [Back to Quick Access](#)

All bookings will be processed through the Chalet Booking Portal. Before any booking can be made, you are required to log in or register an account. For those who have not registered an account prior, you are to follow the steps on the portal to create an account.

To begin, key in your Priority Code at the point of registration in the "Enter Priority Code" section to access your booking privileges of Public Service rates. If no priority code is registered, the chalet rates and booking window will be reflected as Public rates. Please take note that in order for you to register your account, you must successfully register and complete a booking, after which the password will then be forwarded to you via email. For CSC members, they can just log in using their Membership ID and password.

## 8) Can I amend or cancel my confirmed booking? [Back to Quick Access](#)

There will be no refund for cancellation of confirmed bookings. You may only amend your booking if it is due to compassionate or medical reason. Please note that all requests are subjected to management approval. Decision is final and no appeal shall be entertained.

Cancellation and refund requests that do not meet with the above conditions will be subjected to the following refund terms:

| Notice Period     | Amount                              |
|-------------------|-------------------------------------|
| Less than 14 days | No refund available                 |
| Less than 30 days | 25% of booking value to be refunded |
| Less than 60 days | 50% of booking value to be refunded |
| More than 60 days | 90% of booking value to be refunded |

- CSC @ Changi I - please email to [rooms@csc.sg](mailto:rooms@csc.sg)
- CSC @ Changi II - please email to [changi2@csc.sg](mailto:changi2@csc.sg)
- CSC @ Loyang - please email to [loyang@csc.sg](mailto:loyang@csc.sg)

## 9) Can I resell my chalet booking? [Back to Quick Access](#)

Reselling of your chalets booking to another party is strictly prohibited regardless of any circumstance; check-ins of this nature will be refused and the chalet booking considered null and void.

## 10) How many consecutive nights can I book at any given time? [Back to Quick Access](#)

Each person can book up to five (5) consecutive nights at any given time. For longer stays, please contact:

- CSC @ Changi I - please email to [rooms@csc.sg](mailto:rooms@csc.sg)
- CSC @ Changi II - please email to [changji2@csc.sg](mailto:changji2@csc.sg)
- CSC @ Loyang - please email to [loyang@csc.sg](mailto:loyang@csc.sg)

## 11) How many chalet units can I book at any given time? [Back to Quick Access](#)

Each person can only book one (1) chalet unit at any given time during the same stay period. Under the chalet stay terms and conditions, it is strictly prohibited to sublet your chalet to another individual.

## 12) Does CSC engage any intermediary or individual to promote or market the chalets? [Back to Quick Access](#)

CSC does not engage any intermediary or individual to promote or market our chalets. Please exercise caution and due diligence when you see a deal that is too good to be true. Even if a listing appears legitimate, it might be a scam. Should you need to clarify or verify any promotion or news about the chalets, please email to [feedback@csc.sg](mailto:feedback@csc.sg).

## 13) If I have difficulties booking a chalet, what should I do? [Back to Quick Access](#)

You may email to the respective chalet properties and provide the details, as well as a screengrab of the error.

- CSC @ Changi I - please email to [rooms@csc.sg](mailto:rooms@csc.sg)
- CSC @ Changi II - please email to [changji2@csc.sg](mailto:changji2@csc.sg)
- CSC @ Loyang - please email to [loyang@csc.sg](mailto:loyang@csc.sg)

**For more detailed information of each chalet premise, please refer to the respective FAQs**

[Changi I](#)



[Changi II](#)



[Loyang](#)



## Enhancements and Promotions

### 14) What are the new and upcoming enhancements at the chalets?

#### [Back to Quick Access](#)

The Club continuously upgrades and enhances our chalet offerings to improve the chalet guests' experience. CSC @ Changi I is awarded with the BCA Green Mark Platinum, while CSC @ Changi II is BCA Green Mark Gold Plus and CSC @ Loyang is BCA Green Mark Platinum.

Transformations have been made to our chalets, from thematic ambience rooms to upgraded facilities and furniture as the Club aims to provide returning guests with a refreshing experience. The Single Suites and Premier Villa at CSC @ Changi I, Sea View Bungalows and Garden Bungalows at CSC @ Loyang are some of the chalets that were recently refurbished. You may view the image of the refurbished chalets in [the Annex](#).

To provide green and sustainable stay for our guests, all of our chalets are equipped with eco-friendly amenities such as eco-friendly water dispensers, water heating systems and zero waste packaging for toiletries. Do look out for other initiatives and improvement works to be completed soon.

The Club has partnered with F&B eateries around Changi Village for discounts when you present your chalet room card.

### 15) What is the Wonderful Wednesday Promotion all about? [Back to Quick Access](#)

Every Wednesday, the Club will release last-minute chalet deals of up to 30% off standard rates. The promotion is only applicable to chalets that are available in the specified period. Bookings can be made via walk-ins or by email only. You may visit the following websites below or follow our channels to view the latest Wonderful Wednesday Promotions and other chalet promotions:

- CSC @ Changi Microsite at <https://www.cscchangi.sg>
- CSC Corporate Site at <https://www.csc.sg/>
- CSC Facebook Page at @CSC Singapore <https://www.facebook.com/cscsingapore/>
- CSC Telegram Page at @CivilServiceClub at <https://t.me/civilserviceclub>

## Corporate and Wedding Events

### 16) Can I hold my solemnisation/wedding in the chalet? [Back to Quick Access](#)

You may hold wedding activities, but they can only be held at the following chalet types:

|   |   |
|---|---|
| <p><b>CSC @ Changi I</b><br/>For enquiries and full terms and conditions, please email to <a href="mailto:rooms@csc.sg">rooms@csc.sg</a></p>      | <ul style="list-style-type: none"> <li>• Deluxe Villas</li> <li>• Premier Villa</li> <li>• Superior Villas</li> </ul>                 |
| <p><b>CSC @ Changi II</b><br/>For enquiries and full terms and conditions, please email to <a href="mailto:changi2@csc.sg">changi2@csc.sg</a></p> | <ul style="list-style-type: none"> <li>• Fairy Point Chalet 1, 5 or 7</li> <li>• Changi Cottage</li> <li>• Garden Chalet G</li> </ul> |
| <p><b>CSC @ Loyang</b><br/>For enquiries and full terms and conditions, please email to <a href="mailto:loyang@csc.sg">loyang@csc.sg</a></p>      | <ul style="list-style-type: none"> <li>• Seaview Bungalow 1 or 2</li> <li>• Garden Bungalow 3 or 5</li> </ul>                         |

Do take note of the [additional terms and conditions](#) for bookings of chalets for solemnisations/weddings. Chalet promotions and discounts are not applicable for solemnisations/weddings. A wedding surcharge of \$300 is applicable for CSC @ Changi II and CSC @ Loyang.

### 17) Can I use the chalets for my department or agency's team bonding activities or corporate cohesion? [Back to Quick Access](#)

Yes! Team bonding and corporate cohesion activities can be organised at the chalets. You'll enjoy corporate rates for the use of chalets for team bonding and corporate cohesion purposes. The chalets are also under the Demand Aggregation (DA) contract for the Meeting and Event Venue Package and Rental Rates (Tender Reference No. FINVITETT20300009) for Government Ministries and Statutory Boards.

- CSC @ Changi I - please email to [rooms@csc.sg](mailto:rooms@csc.sg)
- CSC @ Changi II - please email to [changi2@csc.sg](mailto:changi2@csc.sg)
- CSC @ Loyang - please email to [loyang@csc.sg](mailto:loyang@csc.sg)

## CSC Members' Benefits for Chalets

### 18) What are the CSC Members' benefits for chalets? [Back to Quick Access](#)

CSC Members get to enjoy the best benefits for chalet bookings – booking period of 120 days and Members' Rate at 20% less Public Service officers' rate.

Besides chalets, CSC Members can enjoy the following benefits:

- Free supplementary membership\* for your immediate parents, parents-in-law, spouse, and children (age 5 to 21 years old) with no additional membership fee
- Free swimming pool access at all Clubhouses
- Members' only booking of CSC's sports facilities
- Members' rate for Club events, social, sports and recreational activities
- Members' rate for the booking of BBQ pavilions, function rooms and parking at all Clubhouses
- Additional 20% Members' discount for the booking of CSC @ Changi I Superior and Deluxe suites during the member's birthday month.
- Members' privileges such as discounts and freebies of products and services at Clubhouse tenants and partnering merchants.

Public Service officers can join as a CSC Member for just \$72 a year. For more information about becoming a CSC member, please visit <https://www.csc.sg/About-CSC-Membership>. For the latest membership promotions, please visit <https://www.csc.sg/Promotion> or scan the following QR code below.

\*For those who opt to have a Virtual Membership card instead, a one-time admin fee of \$10 is applicable for the printing of each physical Supplementary Membership card.

Membership



Membership  
Promotion





# Changi I Annex



CSC @ Changi I, 2 Netheravon Road, Singapore 508503 | Visit us at [www.cscchangi.sg](http://www.cscchangi.sg)



CSC @ Changi I is a beachfront clubhouse and staycation destination with 21 quality accommodations ranging from suites to villas. The Clubhouse is located next to Changi Village and is highly sought after for laid back retreats away from the hustle and bustle of city life, as well as get-togethers and celebrations by friends and families.



## Chalet Type:

Superior Suite (1 bedroom, 43sqm)



Deluxe Suite (1 bedroom, 43sqm)



Family Suite (2 bedrooms, 86sqm)



Family Suite Plus (2 bedrooms, 86sqm)



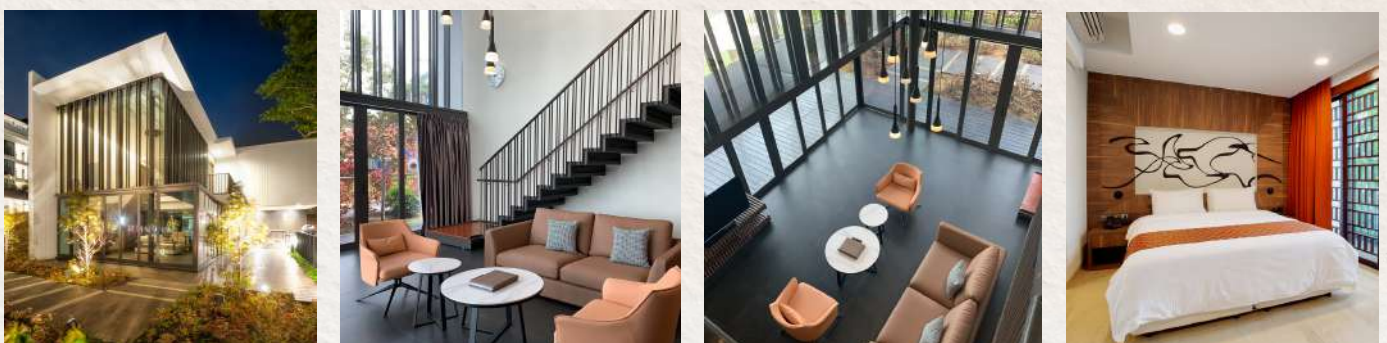
Superior Villa (3 bedrooms, 187sqm)



Deluxe Villa (3 bedrooms, 187sqm)



Premier Villa (3 bedrooms, 277sqm)



# Changi II Annex



CSC @ Changi II, 30 Netheravon Road, Singapore 508522 | Visit us at [www.cscchangi.sg](http://www.cscchangi.sg)



Enjoy a staycation or family get-together at the generously sized chalets at CSC @ Changi II (former Aloha Changi). Set close to nature and preserved in rustic colonial charm; there are 49 units into total ranging from one-bedroom to six-bedrooms bungalows.



## Chalet Type:

Fairy Point Bungalow (3 bedrooms, 151sqm)



Fairy Point Bungalow (1 bedroom, 56sqm)



Fairy Point Bungalows (4 bedrooms, 207sqm)



Fairy Point Chalets (4 bedrooms, 579sqm)



Fairy Point Chalet 3 (5 bedrooms, 579sqm)



Fairy Point Chalet 4 (6 bedrooms, 579sqm)



Fairy Point Chalet 6 (5 bedrooms, 633sqm)



Fairy Point Chalet 7 (4 bedrooms, 697sqm)



Yacht Club Bungalows (3 or 4 bedrooms, 191sqm)



Yacht Club Bungalows (2 bedrooms, 191sqm)



Yacht Club Chalet (5 bedrooms, 322sqm)



Netheravon Terraces (1 bedroom, 34sqm)



Seafront Chalets (4 bedrooms, 270sqm)



Garden Chalets (5 bedrooms, 322sqm)



Changi Cottage (3 bedrooms, 192sqm)



# Loyang Annex



CSC @ Loyang, 159W Jalan Loyang Besar, Singapore 507020 | Visit us at [www.cscloyang.sg](http://www.cscloyang.sg)



CSC @ Loyang (formerly known as Aloha Loyang), is located right next to Pasir Ris Park and houses a total of 38 units, including Singapore's largest dog-friendly chalet. A preferred choice for families, the chalets offer many outdoor activities such as kayaking or cycling.



## Chalet Type:

Pool Terraces (4 bedrooms, 360sqm)



Garden Terraces (2 bedrooms, 270sqm)



Sea View Terraces (4 bedrooms, 360sqm)



Sea View Bungalows (4 bedrooms, 286sqm)



Dog-Friendly Bungalows (4 bedrooms, 286sqm)



Garden Bungalows (4 bedrooms, 286sqm)



Sea View Bungalow 1 (4 bedrooms, 286sqm)

